

STANDARD EQUIPMENT

AIR CLEANER – Two, dry type with rain shield and service indicator.

BARRING DEVICE – Manual.

BEARINGS – Heavy duty, replaceable, precision type.

BREATHER – Closed system.

CONNECTING RODS – Drop forged steel, rifle drilled.

CONTROL SYSTEM – Pneumatic. Includes pilot operated valves for air start and prelube. Engine mounted control panel with two push button valves. Pilot operated air start valves omitted when starter is not furnished by Waukesha. Includes engine On/Off push button. One mounted on either side of the engine.

CRANKCASE – Integral crankcase and cylinder frame. Main bearing caps drilled and tapped for temperature sensors. Does not include sensors.

CRANKSHAFT – Counterweighted, forged steel, seven main bearings, and dynamically balanced.

CYLINDERS – Removable wet type cylinder liners, chrome plated on outer diameter. Induction hardened.

CYLINDER HEADS – Twelve interchangeable. Two hard faced intake and two hard faced exhaust valves per cylinder. Hard faced intake and exhaust valve seat inserts. Roller valve lifters and hydraulic push rods.

ENGINE ROTATION – Counterclockwise when facing flywheel.

ENGINE MONITORING DEVICES – Engine thermocouples, K-type, are wired to a bulk head connector (*GSI Engines*) or common junction box (*G Engines*) for jacket water temperature, lube oil temperature, and intake manifold temperature. Magnetic pickup wired for customer supplied tachometer. Lube oil pressure and intake manifold pressure sensing lines are terminated in a common bulk head. *GSI Engines* - 25 foot (7.6 m) customer interface and standard thermocouple harness are provided for making connections to a customer supplied panel.

FLYWHEEL – Approx. $WR^2 = 155000 \text{ lb-in}^2$; with ring gear (208 teeth), machined to accept two drive adapters: 31.88" (810 mm) pilot bore, 30.25" (768 mm) bolt circle, (12) 0.75"-10 tapped holes; or 28.88" (734 mm) pilot bore, 27.25" (692 mm) bolt circle, (12) 0.625"-11 tapped holes and (12) 0.75"-10 tapped holes.

FUEL SYSTEM – Dual, natural gas, 4" (102 mm) updraft. *GSI Engines* - Two Fisher 99, 2" (51 mm) gas regulators, 25-50 psi (172-245 kPa) inlet pressure required. *G Engines* - Two Fisher Model S-201, 2" (51 mm) gas regulators, 12 psi (83 kPa) maximum inlet pressure.

FLYWHEEL HOUSING – No. 00 SAE.

GOVERNOR – Woodward UG-8 LD hydraulic lever type, with friction type speed control. Mounted on right hand side.

IGNITION – Waukesha Custom Engine Control Ignition Module. Electronic digital ignition system. 24V DC power required.

LEVELING BOLTS

LIFTING EYES

LUBRICATION – Full pressure. Gear type pump. Full flow filter, 36 gallon (136 litres) capacity, not mounted. Includes flexible connections. Includes lube oil strainer, mounted on engine. Air/gas motor driven prelube pump. Requires final piping.

MANIFOLDS – Exhaust, (2) water cooled with single vertical 8 inch (203 mm) flange at rear, and flexible stainless steel exhaust connection.

OIL COOLER – With thermostatic temperature controller and pressure regulating valve. *GSI Engines* - Factory mounted. *G Engines* - Not mounted.

OIL PAN – Base type. 90 gallon (340 litres) capacity including filter and cooler.

PAINT – Oilfield orange primer.

PISTONS – Aluminum with floating pin. Standard 8:1 compression ratio. Oil cooled.

SHIPPING SKID – Steel for domestic truck or rail.

VIBRATION DAMPER – Viscous type. Guard included with remote mounted radiator or no radiator.

WATER CIRCULATING SYSTEM

Auxiliary Circuit – For oil cooler. Pump is belt driven from crankshaft pulley.

Engine Jacket – Belt driven water circulating pump, cluster type thermostatic temperature regulating valve, full flow bypass type. Flange connections and mating flanges for (2) 4" (102 mm) inlets and (1) 5" (127 mm) outlet.

WAUKESHA CUSTOM ENGINE CONTROL, DETONATION SENSING MODULE (DSM) – Includes individual cylinder sensors. Compatible with Waukesha CEC Ignition Module only. Packager is responsible for 24V DC power supply and ground to the DSM. The DSM meets Canadian Standards Association Class 1, Division 2, Group D hazardous location requirements. *GSI Engines* - Detonation Sensing Module, sensors and filter are mounted and wired. *G Engines* - Sensors are mounted and wired to engine junction box. Detonation Sensing Module, filter, one 11 ft. cable, two 15 ft. cables and one 20 ft. cable are shipped loose.

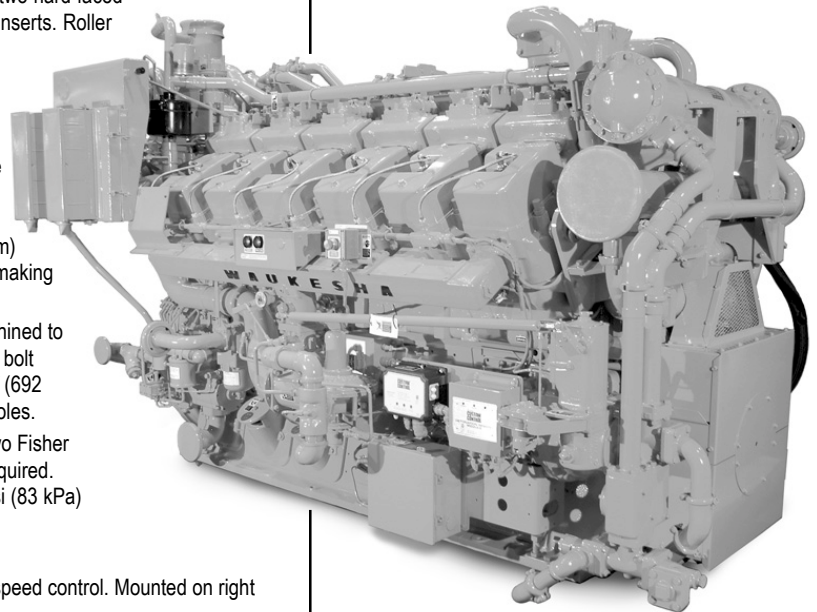
Waukesha[®]

VHP

L7042G/GSI

VHP™ Series Gas Engine

675 - 1547 BHP



Model L7042G Naturally Aspirated
Model L7042GSI Turbocharged and Intercooled,
Twelve Cylinder, Four-Cycle Gas Engine

SPECIFICATIONS

Cylinders V 12	Lube Oil Capacity 90 gal. (340 L)
Piston Displacement 7040 cu. in. (115 L)	Starting System 125 - 150 psi air/gas 24/32 V electric
Bore & Stroke 9.375" x 8.5" (238 x 216 mm)	Dry Weight G Models 20,500 lb. (9300 kg) GSI Models 21,000 lb. (9525 kg)
Compression Ratio Standard 8:1 Optional 10:1	
Jacket Water System Capacity 107 gal. (405 L)	

Waukesha Engine
 **ISO 9001**
CERTIFIED

POWER RATINGS: L7042G/GSI VHP SERIES GAS ENGINES

Brake Horsepower (kWb Output)

Model	I.C. Water Inlet Temp. °F (°C) (T _{cr})	C.R.	800 rpm	900 rpm	1000 rpm	1100 rpm	1200 rpm
L7042GSI	85° (29°)	8:1	1031 (769)	1160 (865)	1289 (961)	1418 (1057)	1547 (1154)
L7042GSI	130° (54°)	8:1	985 (735)	1108 (826)	1232 (919)	1355 (1010)	1478 (1102)
L7042G	—	10:1	732 (546)	818 (610)	896 (668)	966 (721)	1024 (764)
L7042G	—	8:1	675 (504)	748 (558)	810 (604)	866 (646)	912 (680)

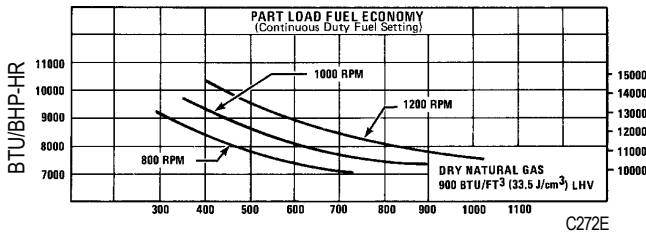
Rating Standard: All models: Ratings are based on ISO 3046/1-1995 with mechanical efficiency of 90% and auxiliary water temperature T_{cr} (clause 10.1) as specified above limited to ± 10° F (± 5° C). Ratings are also valid for SAE J1349, BS5514, DIN6271 and AP17B-11C standard atmospheric conditions.

ISO Standard Power/Continuous Power Rating: The highest load and speed which can be applied 24 hours a day, seven days a week, 365 days per year except for normal maintenance. It is permissible to operate the engine at up to 10% overload, or maximum load indicated by the intermittent rating, whichever is lower, for two hours in each 24 hour period.

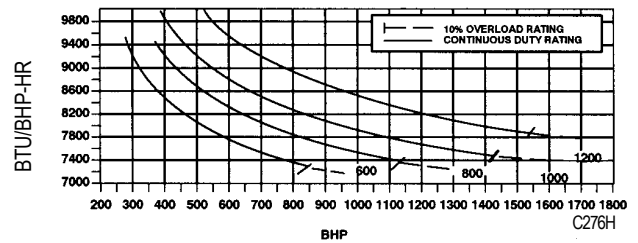
All natural gas engine ratings are based on a fuel of 900 Btu/ft³ (35.3 MJ/nm³) SLHV value, with a 91 Waukesha Knock Index®.

For conditions or fuels other than standard, the Waukesha Engine Sales Engineering Department.

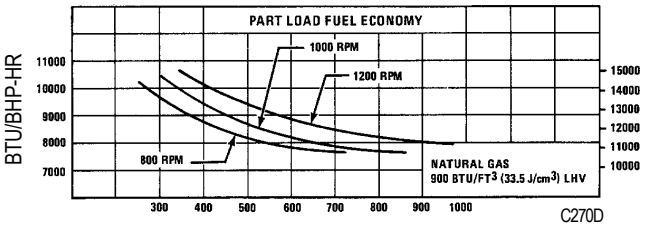
L7042G Engine
Naturally Aspirated
10.1:1 Compression Ratio - Natural Gas



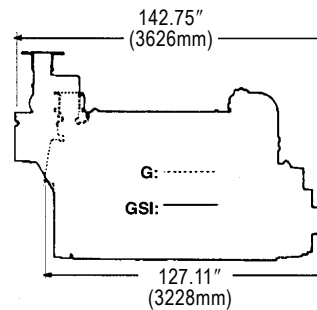
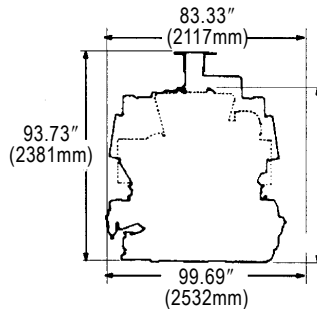
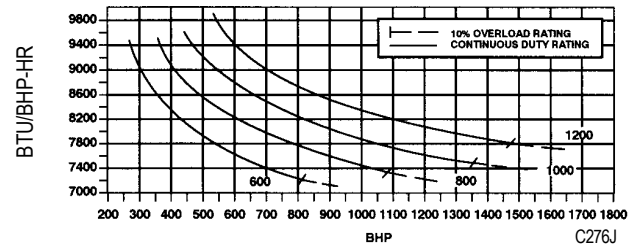
L7042GSI Engine
Turbocharged-Intercooled - 8:1 Compression Ratio
85° Intercooler Water



8.2:1 Compression Ratio - Natural Gas



130° Intercooler Water



Waukesha

**WAUKESHA ENGINE
DRESSER, INC.**

1000 West St. Paul Avenue
Waukesha, WI 53188-4999
Phone: (262) 547-3311 Fax: (262) 549-2795
waukeshaengine.dresser.com

Bulletin 7011 0102

**WAUKESHA ENGINE
DRESSER INDUSTRIAL PRODUCTS, B.V.**

Farmsumerweg 43, Postbus 330
9900 AH Appingedam, The Netherlands
Phone: (31) 596-652222 Fax: (31) 596-628111

Consult your local Waukesha Distributor for system application assistance. The manufacturer reserves the right to change or modify without notice, the design or equipment specifications as herein set forth without incurring any obligation either with respect to equipment previously sold or in the process of construction except where otherwise specifically guaranteed by the manufacturer.